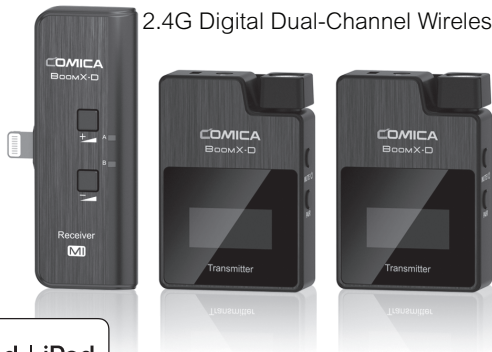


# BoomX-D MI

2.4G Digital Dual-Channel Wireless Microphone



Made for  
Apple iPhone | iPad | iPod

## User Manual



## Foreword

Thanks for purchasing COMICA BoomX-D MI 2.4G Digital Dual-Channel Wireless Microphone.  
To ensure bring you a good using experience, please read this manual book carefully before using and correctly install and operate.

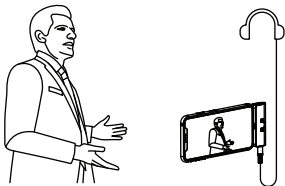
## Main Features

- . 2.4G Digital Wireless, Global Free Frequency
- . Dual-Channel 2.4G Wireless Microphone
- . Visual Power, Audio Dynamic Monitor and Other Display Functions
- . Internal and External MIC Two Input Modes
- . Real-time Audio Monitor
- . Broadcasting Quality Audio
- . RF Technology, Auto Freq. Adjustment, Stable Transmission
- . Low Latency < 20ms
- . Working Range Up to 50m
- . Designed with Multi-functional Belt Clip and Compact

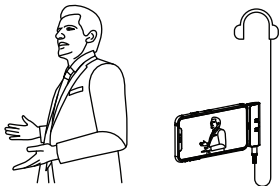
## Notice

- ⚠ Due to 2.4G wireless characteristics, please keep face to face when use it, and don't turn your back to the receiver, otherwise it is easy to generate breakpoints, which is a normal phenomenon
- ⚠ Don't block the antenna position to avoid any poor signal generated
- ⚠ When using the playback recording function with devices of iOS system, it can not achieve it due to the protection of the iOS system if the volume of the device is adjusted to the maximum before monitoring, you need to readjust the volume of the device to realize playback recording (It is recommended that the headphone volume is not adjusted to the maximum)
- ⚠ When using on mobile phone, please turn off WIFI and Bluetooth to avoid 2.4G wireless interference
- ⚠ This product belongs to high-precision instruments, please avoid falling, collision or pounding
- ⚠ Do not use this equipment in the vicinity of heat source or interference source, such as radiator, oven, refrigerator or air conditioner, smartphone or next to the WIFI AP
- ⚠ If the pick-up distance is close or when used outdoors, please put on the wind muff to prevent sound burst or reduce wind noise
- ⚠ Do not use the equipment in rain or in a damp environment to avoid short-circuit danger
- ⚠ Please keep the product in a dry environment

Please keep face to face when use it, and don't turn your back to the receiver, otherwise it is easy to generate breakpoints.

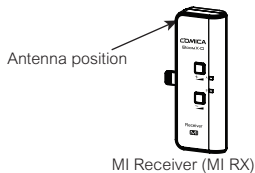
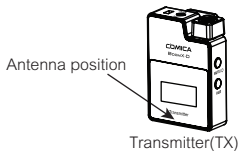


Face to receiver (correct)



Back to receiver (incorrect)

Don't block the antenna position to avoid any poor signal generated.

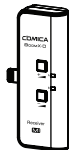


## Packing List

Main Parts:



Transmitter(TX)



MI Receiver (MI RX)

Multiple Selections:



MI1 = TX + MI RX



MI2 = TX + TX + MI RX

## Accessories:

- ① 3.5mm Mic Audio Input Cable
- ② Wind Muff
- ③ USB A-USB C Charging Cable
- ④ Reset Pin
- ⑤ User Manual
- ⑥ Warranty Card



①



②



③



④



⑤



⑥

The accessories of each combination include:

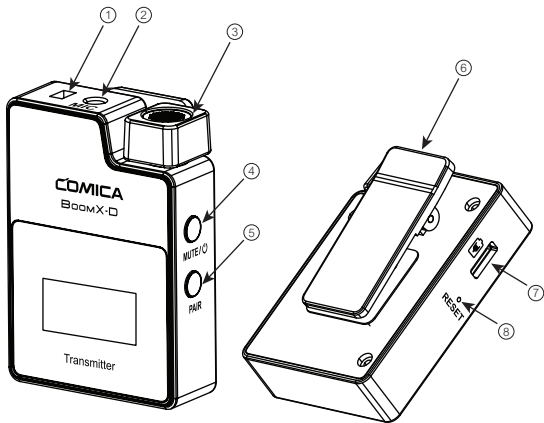
MI1= ① + ② + ③ + ④ + ⑤ + ⑥

MI2= ①x2 + ②x2 + ③ + ④ + ⑤ + ⑥

## Components and Instruction

### Transmitter (TX)

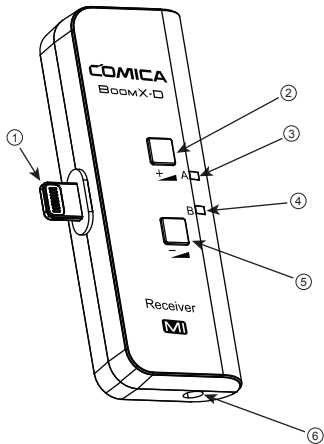
1. External Mic Locking Buckle
2. 3.5mm TRS Port of External Mic
3. Internal Mic
4. Power/Muting Button
5. Pair Button
6. Belt Clip
7. USB-C Charging Port
8. Reset Hole





## MI Receiver (MI RX)

1. Lightning Connector
2. Output Volume Adjustment Button+
3. Group A Working Status Indicator
4. Group B Working Status Indicator
5. Output Volume Adjustment Button-
6. 3.5mm TRS/TRRS Monitoring Port

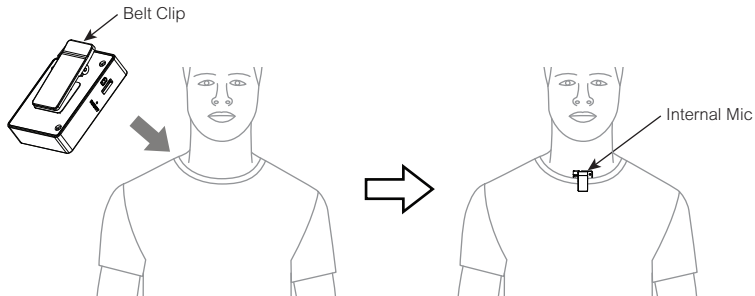


## Installation

### Transmitter (TX)

#### 1. Use internal microphone :

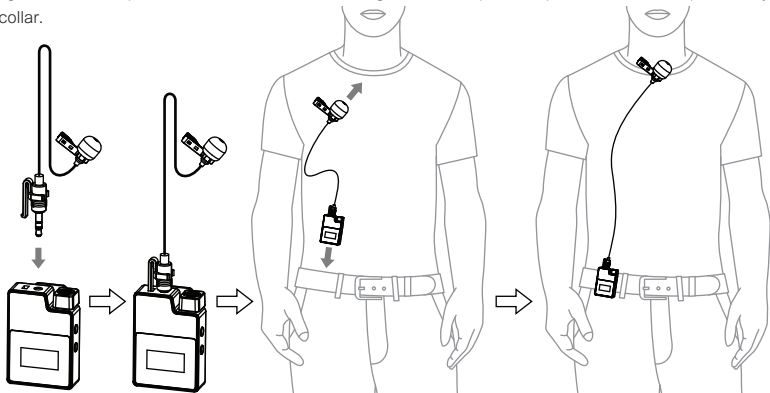
Install the transmitter on the collar through the belt clip so that the internal microphone points in the direction of the sound source.



👉 For better concealment during use, it is recommended that the belt clip be fixed and used outwards.

## 2. Use external microphone:

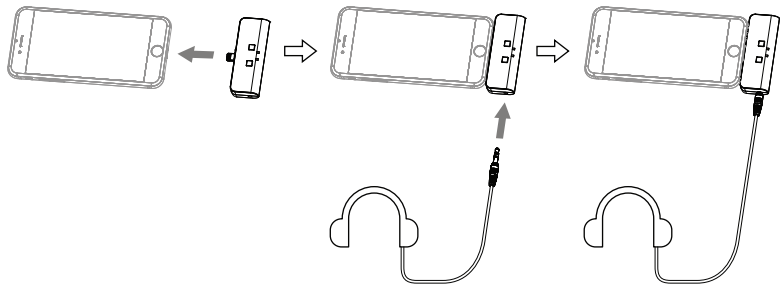
Insert the 3.5mm TRS microphone input cable into the transmitter's 3.5mm TRS external microphone port and tighten it, then clip the transmitter to the belt through the belt clip and clip the lavalier microphone to your collar.



When using an external microphone, the internal microphone is automatically turned off.

## MI Receiver (MI RX)

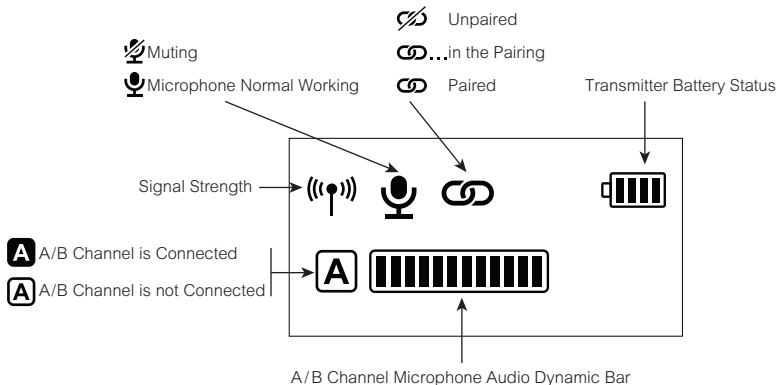
Insert the MI receiver (MI RX) into the Lightning interface of the phone; Insert the headphone into the 3.5mm TRS/TRRS monitoring port for monitoring.



## Function and Usage

### Transmitter (TX)

#### 1. Screen Display Instruction:



## 2.Function Introduction:

### 2.1. Power/Muting Button

Long press for On/Off; Short press for muting switch( Muting switch is available only when the screen is on, if the screen is dimmed, press any button to light up the screen then switch the mute).



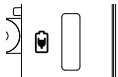
### 2.2. Pair Button

Long press for pairing with receiver (Pairing switch is available only when the screen is on, if the screen is dimmed, press any button to light up the screen then pairing).



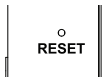
### 2.3. USB-C Charging Port

Connect the transmitter with the power through the USB A-USB C charging cable to charge.



## 2.4. Reset Hole

If there is an abnormal phenomenon such as the device is crash or unable to turn on it, then insert the reset pin into the reset hole to reset it.



## 2.5. 3.5mm TRS Microphone Port

Insert the 3.5mm TRS microphone input cable, and you can use the external lavalier microphone for recording. At this time, the internal microphone of this device is turned off.



## MI Receiver (MI RX)

### Function Introduction:

#### 1. Lightning Connector

Insert into the Lightning interface of phone to use.



#### 2. Output Volume Adjustment Button

Short press to adjust the output volume (6 levels), and A/B channel is synchronized.





### 3. A/B Working Status Indicator

The indicator is red when unpaired. After paired, the indicator is blue.

A

B

### 4. 3.5mm TRS/TRRS Monitoring Port

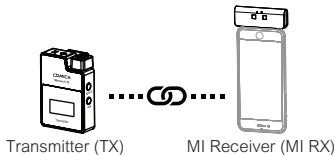
Insert headphone to monitor.



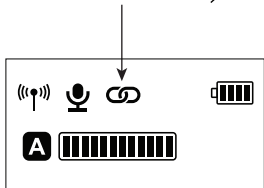
# Pairing Method

(All have been paired at the factory. If you need to re-pair, please follow the description)

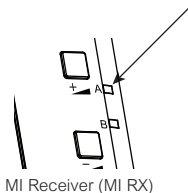
The transmitter (TX) is pairing with MI Receiver (MI RX)



The screen icon changes from  to  after pairing

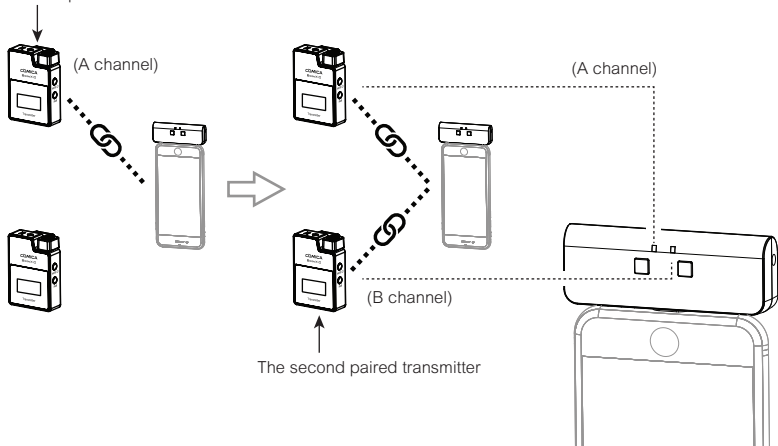


The channel indicator on the MI receiver (MI RX) changes from red to blue



Two transmitters (TX) are pairing with MI Receiver (MI RX)

The first paired transmitter



## Specification

### Transmitter (TX)

Wireless Band	2400 ~ 2483.5MHz
Transmitting Power	+10dBm
Receiving Sensitivity	-86dBm
Antenna	PCB Antenna
Polar Pattern	Omnidirectional
Frequency Response	80Hz ~ 20kHz
Sound Delay	<20ms
External Mic Input Interface	3.5mm TRS
Battery	Built-in Li-ion Battery 300mAh 3.7V
Battery Life	5 Hours
Net Weight	29g
Dimension	39 x 22 x 55mm
Operating Temperature	0°C ~ 50°C

## MI Receiver (MI RX)

Wireless Band	2400 ~ 2483.5MHz
Transmitting Power	+10dBm
Receiving Sensitivity	-86dBm
Antenna	PCB Antenna
Volume Levels	6 Levels (3dB/Level)
Sound Delay	<20ms
Data Interface	Lightning
Monitoring Interface	3.5mm TRS/TRRS
Net Weight	19g
Dimension	33 x 13 x 70mm
Operating Temperature	0°C ~ 50°C



**COMICA** 科  
PROFESSIONAL AUDIO EQUIPMENT 唛

BoomX-D MI

2.4G数字无线双通道麦克风



Made for

Apple iPhone | iPad | iPod

用户使用手册





## 前 言

感谢您购买COMICA/科唛BoomX-D MI 2.4G无线麦克风。

为保证产品的顺畅使用，请在使用前严格阅读本说明书，并正确组装及操作。

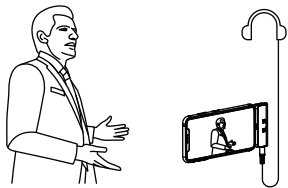
## 产品主要功能

- 2.4G数字无线，全球通用频段
- 双通道无线麦克风，两路发射一路接收
- 可视化电量，音频动态监控等屏显功能
- 内置和外置MIC两种输入方式
- 支持实时监听
- 高保真音质
- 自动跳频，传输稳定
- 低音频延迟<20ms
- 传输距离稳定高达50m
- 多功能背夹设计，小巧精悍

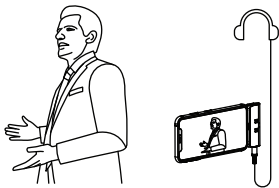
## 注意事项

- △ 由于2.4G无线特性，使用时尽量保持面对面，避免背对的情况，否则容易产生断点，属正常现象
- △ 使用时避免任何物体遮挡天线位置，以免信号不良
- △ 搭配iOS系统设备使用回放监听功能时，如耳机音量在监听前被调至最大，由于iOS系统的保护机制，会导致监听无输出，此时重新调整耳机音量大小即可。（建议耳机音量不要调至最大）
- △ 使用于手机上时，请将WIFI和蓝牙关闭，避免2.4G无线干扰
- △ 本产品属于高精密仪器类产品，请避免使用时掉落、碰撞或重击
- △ 请勿将本设备放置在热源或干扰源附近使用，如散热器、烤箱、WIFI热点或其它无线设备旁边
- △ 如拾音距离较近或于户外使用时，请套上麦克风防风毛，防止声音爆裂或降低风噪
- △ 不要在雨中或潮湿的环境中使用该设备，否则会有短路的危险
- △ 请在干燥环境中对该产品进行保存

尽量保持面对面，避免背对的情况，否则容易产生断点。

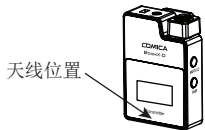


面对面（正确）



背对（错误）

使用时避免任何物体遮挡天线位置，以免信号不良。



发射器 (TX)



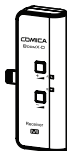
MI接收器 (MI RX)

## 包装清单

主体:



发射器 (TX)



MI接收器 (MI RX)

搭配选择:



MI1 = TX + MI RX



MI2 = TX + TX + MI RX

配件:

- ① 3.5mm 麦克风输入线
- ② 防风毛
- ③ USB A-USB C充电线
- ④ 复位针
- ⑤ 说明书
- ⑥ 保修卡



①



②



③



④



⑤



⑥

每一个型号的配件包括:

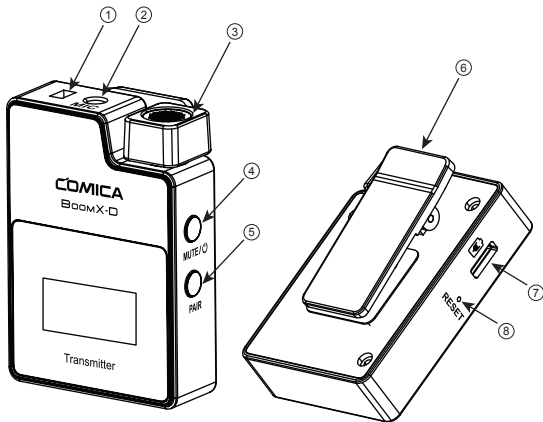
MI1= ① + ② + ③ + ④ + ⑤ + ⑥

MI2= ①x2 + ②x2 + ③ + ④ + ⑤ + ⑥

## 部件介绍及说明

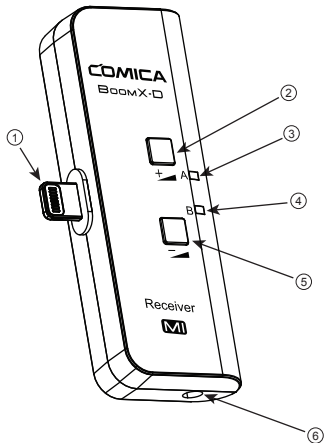
### 发射器 (TX)

1. 外置麦克风插头卡扣
2. 3.5mm TRS外置麦克风插孔
3. 内置麦克风
4. 电源/静音按钮
5. 配对按钮
6. 背夹
7. USB-C充电插口
8. 复位孔



## MI接收器 (MI RX)

1. Lightning接头
2. 麦克风输出音量调节+
3. A通道工作状态指示灯
4. B通道工作状态指示灯
5. 麦克风输出音量调节-
6. 3.5mm TRS/TRRS耳机监听插孔

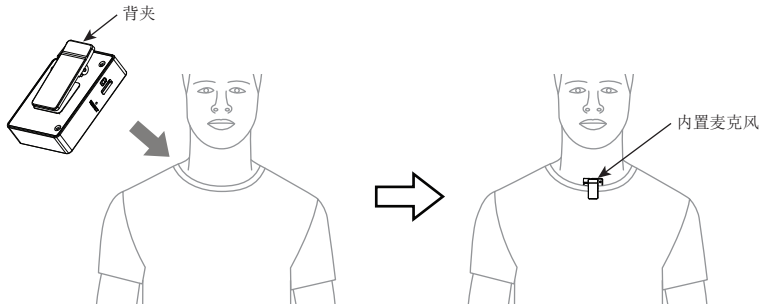


## 安装方法

### 发射器 (TX)

#### 1. 使用内置麦克风:

把发射器通过背夹安装到衣领上，使内置麦克风指向音源方向。

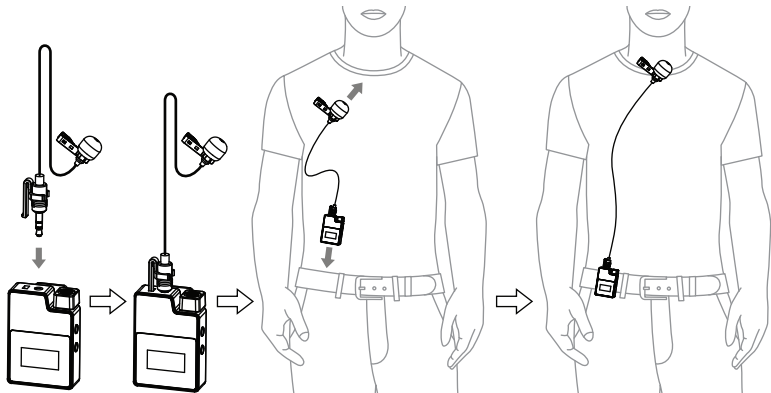


👉 在使用过程中为了更好的隐蔽性，建议将背夹朝外固定使用。



## 2. 使用外置麦克风:

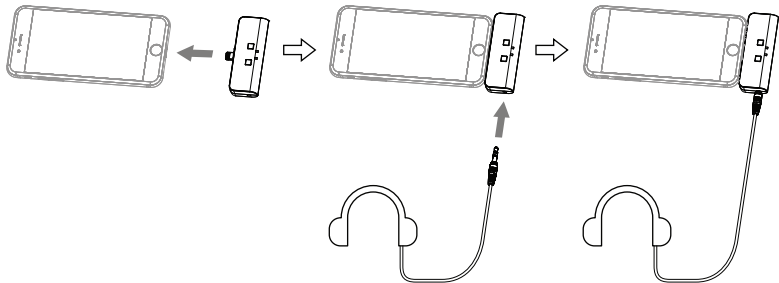
把3.5mm TRS麦克风输入线插入发射器的3.5mm TRS外置麦克风插孔并扣紧; 把发射器通过背夹夹到腰带上, 再把另一头的领夹麦克风夹到衣领上。



👉 当使用外置麦克风时，内置麦克风会自动关闭。

## MI接收器 (MI RX)

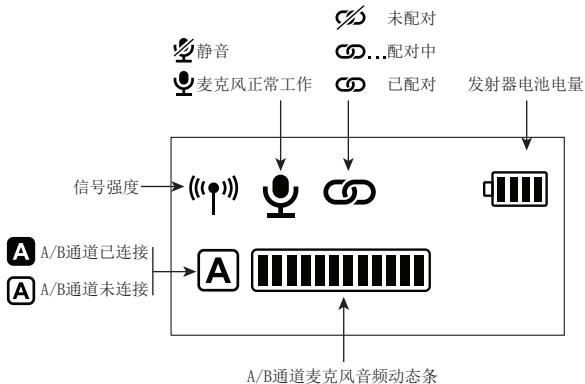
把MI接收器 (MI RX) 插入手机的Lightning接口；把耳机插入3.5mm TRS/TRRS耳机监听插孔进行监听。



# 功能与使用方法

## 发射器 (TX)

### 1. 屏幕显示:



## 2. 功能介绍:

### 2.1. 电源/静音按钮

长按开机/关机，短按进行静音切换(静音切换必须在屏幕亮显时才可用，如果屏幕暗显，请先按任何按键使屏幕亮显再进行静音切换)。



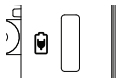
### 2.2. 配对按钮

长按与接收器进行配对(配对切换必须在屏幕亮显时才可用，如果屏幕暗显，请先按任何按键使屏幕亮显再进行配对)。



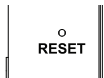
### 2.3. USB-C充电插口

通过USB A-USB C充电线连接发射器与电源进行充电。



#### 2.4. 复位孔

如出现死机或开不了机等异常现象，使用复位针插入复位孔即可复位。



#### 2.5. 3.5mm TRS 麦克风插孔

插入3.5mm TRS 麦克风输入线，即可使用外置领夹麦克风进行录音，此时本机的内置麦克风被关闭。



## MI接收器 (MI RX)

功能介绍:

### 1. Lightning接头

插入手机Lightning接口即可使用。



### 2. 麦克风输出音量调节

短按可调节麦克风输出音量，共有6档音量调节，A/B通道同步调节。



3. A/B通道状态指示灯

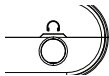
未配对时亮红灯，配对成功后亮蓝灯。

A

B

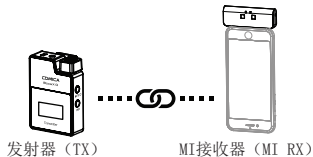
4. 3.5mm TRS/TRRS耳机监听插孔



插入3.5mm TRS/TRRS耳机即可监听。

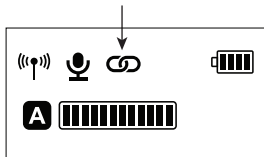


配对方法（出厂时均已配对，如需重新配对时可按如下描述操作）

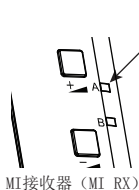
一个发射器（TX）与MI接收器（MI RX）配对



配对成功后屏幕图标由  变成 

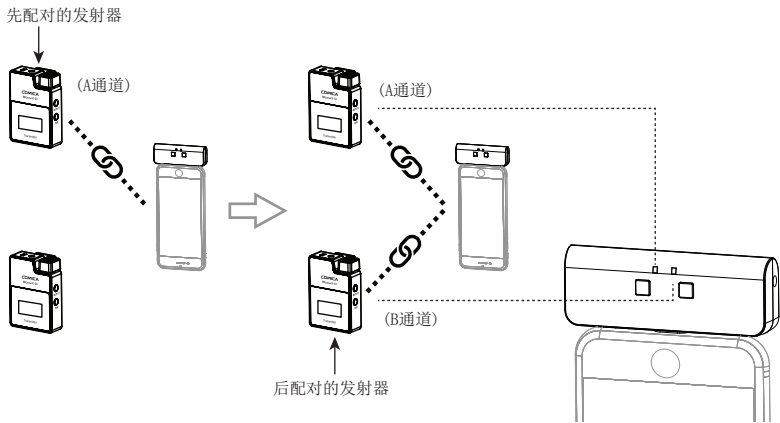


配对成功后MI接收器（MI RX）的  
通道指示灯由红色变成蓝色





两个发射器 (TX) 与MI接收器 (MI RX) 配对



## 技术规格

### 发射器 (TX)

无线频段	2400 ~ 2483.5MHz
发射功率	+10dBm
接收灵敏度	-86dBm
天线	PCB天线
麦克风指向性	全指向
麦克风频响	80Hz ~ 20kHz
声音延迟	<20ms
外置输入接口	3.5mm TRS
电池	锂聚合物 300mAh 3.7V
续航时间	5小时
净重	29g
尺寸	39 x 22 x 55mm
工作温度	0°C ~ 50°C

## MI接收器 (MI RX)

无线频段	2400 ~ 2483.5MHz
发射功率	+10dBm
接收灵敏度	-86dBm
天线	PCB天线
麦克风音量调节档位	共6档 (3dB/档)
声音延迟	<20ms
数据接口	Lightning
监听接口	3.5mm TRS/TRRS
净重	19g
尺寸	33 x 13 x 70mm
工作温度	0°C ~ 50°C



[www.comica-audio.com](http://www.comica-audio.com)

Email: [support@comica-audio.com](mailto:support@comica-audio.com)

The COMICA LOGO is trademark which is registered and owned by Commlite Technology Co.,Ltd